



Kansas Logistics Park in Newton, Kansas has two sites that have been designated as BNSF Certified Sites. BNSF certification ensures a site is ready for rapid acquisition and development through a comprehensive evaluation of existing and projected infrastructure, environmental and geotechnical standards, utility evaluation and site availability.

SELECTING A CERTIFIED SITE CAN:

- Reduce development time
- Increase speed to market
- Reduce upfront development risk of rail-served industrial sites

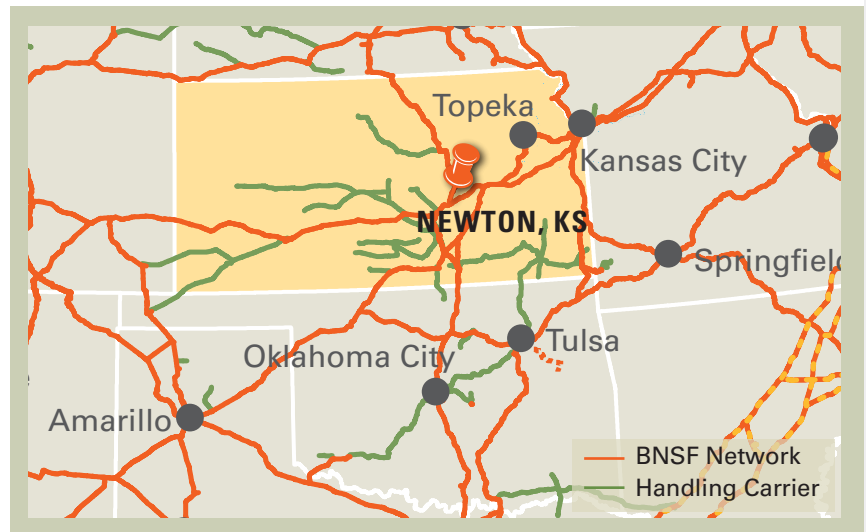
PROPERTY DETAILS

Kansas Logistics Park (KLP), located in Newton Kansas, consists of two 42-acre parcels located on the southeast side of the city. These two sites are part of a 400 acre industrial development located just off Interstate 135 and State Highway 50 with access to BNSF Railway via the Kansas and Oklahoma Railroad. The park takes advantage of both rail and major interstates and offers ample areas for enclosed warehousing or outside storage.

KLP is centrally located which makes it an ideal location from which to serve manufacturing and transportation industries.

Site Details:

- Two 42-acre sites
- Direct access to Interstate 135 and State Highway 50
- Centrally located in the state of Kansas, as well as the United States



CONTACT INFORMATION

BNSF Regional Manager

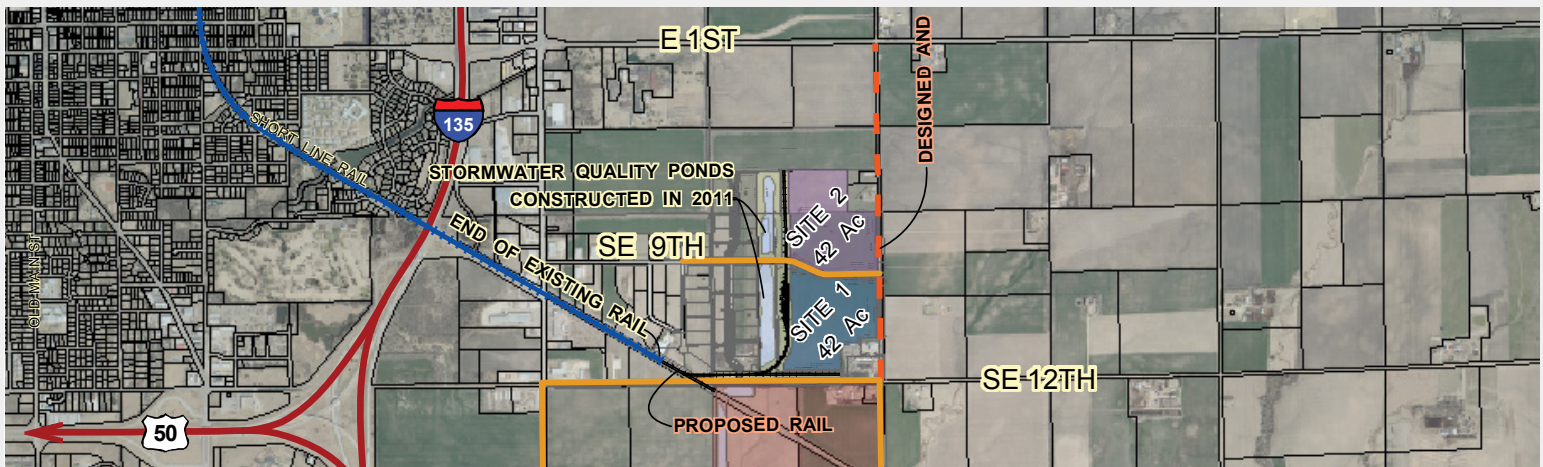
John Rider

913.551.4148

john.rider@bnsf.com

Harvey County Economic Development

316.283.6033



SITE PROFILE	
Land Area	Two 42-acre sites
Physical Address	SE 12th St. & Hillside Rd. Newton, KS (Harvey Co.)
Zoning	General Industrial
Owner	City of Newton
Price	\$8,000 per acre (long-term lease)

UTILITIES	
Electric	Westar Energy & Butler County Rural Electric Cooperative
Gas	Kansas Gas Service
Water	City of Newton
Wastewater	City of Newton
Telecommunications	Cox Communications and AT&T

DEMOGRAPHICS	
Newton is part of the Wichita Metropolitan Statistical Area (MSA). The MSA has an estimated population of 641,076.	

POPULATION	
Newton, KS	19,144
5 mile radius	21,911
10 mile radius	29,612
15 mile radius	47,127
20 mile radius	76,423

WORKFORCE	
Newton attracts commuters from the Wichita Metropolitan Statistical Area.	
Total Wage & Salary Employment	290,100
Annual Mean Wage	\$41,800

BNSF PREMIER PARKS, SITES AND TRANSLOAD PROGRAM

BNSF Certified Sites are a part of the Premier Parks, Sites and Transload program which is a strategic approach to addressing the increasing demand for customer site locations by developing various types of facilities across the BNSF network. BNSF Certified Sites have been reviewed by an industry expert in order to ensure accurate, reliable data. Our goal is to provide an inventory of rail-served sites that are available for immediate development.*

* In order to ensure a safe, efficient and economical switch operation, BNSF will want to review and approve the engineering plans to serve each tenant facility.