



The Port of Northern Montana Multimodal Hub Center, consisting of 18 leasable lots in Shelby, Montana, has been designated as a BNSF Certified Site. BNSF certification ensures a site is ready for rapid acquisition and development through a comprehensive evaluation of existing and projected infrastructure, environmental and geotechnical standards, utility evaluation and site availability.

**SELECTING A CERTIFIED SITE CAN:**

- Reduce development time
- Increase speed to market
- Reduce upfront development risk of rail-served industrial sites

**PROPERTY DETAILS**

The Port of Northern Montana Multimodal Hub Center is designed as a fully functional inland port capable of receiving and delivering large industrial equipment and multiple bulk materials. Located at the intersection of two major BNSF Railway lines, Interstate Highway 15, and US Highway 2, the Center represents a major enhancement of regional logistics capacity including site development, new and enlarged roads, other traffic improvements, and nearly 15,000 feet of new rail line.

The Port of Northern Montana is a collaborative effort by public and private organizations to improve logistics for thousands of square miles of highly productive and growing parts of northern Montana and southern Alberta.

**Site Details:**

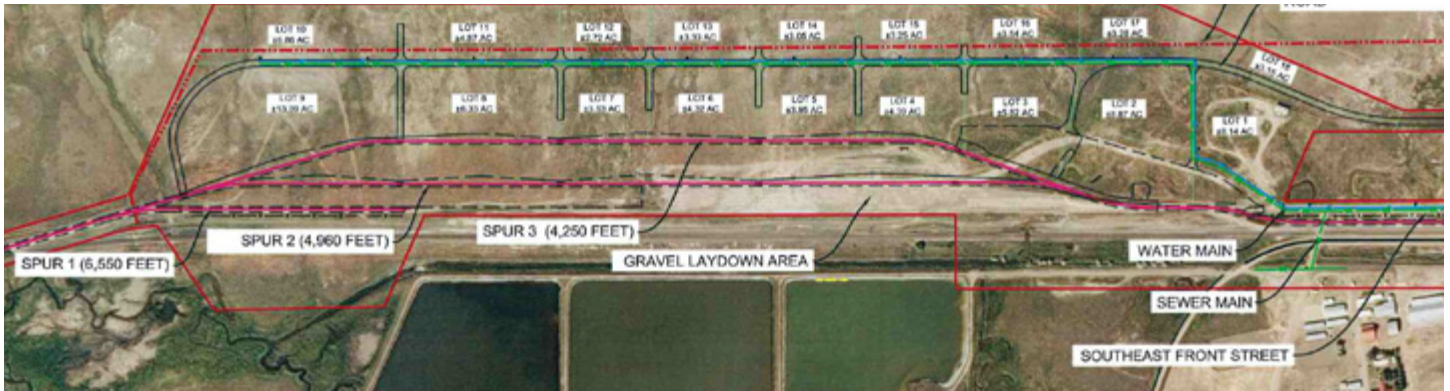
- 93 available acres (18 individual lots)
- Direct rail access to BNSF Railway
- Access to Interstate Highway 15 and U.S. Highway 2
- Inland port capable of handling large industrial equipment and materials
- Bulk rail car transloading





**CONTACT INFORMATION**



BNSF Regional Manager  
**Justin Pearson**  
701.667.7425  
justin.pearson@bnsf.com


Port of Northern Montana  
**Mayor Larry Bonderud**  
406.434.5203  
larry@shelbymt.com



 <b>SITE PROFILE</b>	
<b>Land Area</b>	93 acres
<b>Physical Address</b>	111 First St. South Shelby, MT 59474 (Toole County)
<b>Zoning</b>	General Industrial District
<b>Owner</b>	Northern Express Transportation Authority
<b>Price</b>	\$30,000 per acre

 <b>UTILITIES</b>	
<b>Electric</b>	Marias River Electric Coop
<b>Gas</b>	Shelby Gas Association
<b>Water</b>	City of Shelby
<b>Wastewater</b>	City of Shelby
<b>Telecommunications</b>	3 Rivers Communications and Qwest

 <b>DEMOGRAPHICS</b>	
Shelby is the county seat of Toole County. The county population is approximately 5,300.	
 <b>POPULATION</b>	
<b>Shelby, MT</b>	3,376
<b>15 mile radius</b>	3,519
<b>20 mile radius</b>	4,473
<b>25 mile radius</b>	11,752

 <b>WORKFORCE</b>	
Shelby attracts commuters from many of the surrounding areas.	
<b>Total Wage &amp; Salary Employment</b>	2,889
<b>Annual Mean Wage</b>	\$40,464

## BNSF PREMIER PARKS, SITES AND TRANSLOAD PROGRAM

BNSF Certified Sites are a part of the Premier Parks, Sites and Transload program which is a strategic approach to addressing the increasing demand for customer site locations by developing various types of facilities across the BNSF network. BNSF Certified Sites have been reviewed by an industry expert in order to ensure accurate, reliable data. Our goal is to provide an inventory of rail-served sites that are available for immediate development.\*

\* In order to ensure a safe, efficient and economical switch operation, BNSF will want to review and approve the engineering plans to serve each tenant facility.