

Minot, ND Flood Structures

June 25-26, 2011

Yard Office



Yard Office



Amtrak



Amtrak





Lake Darling



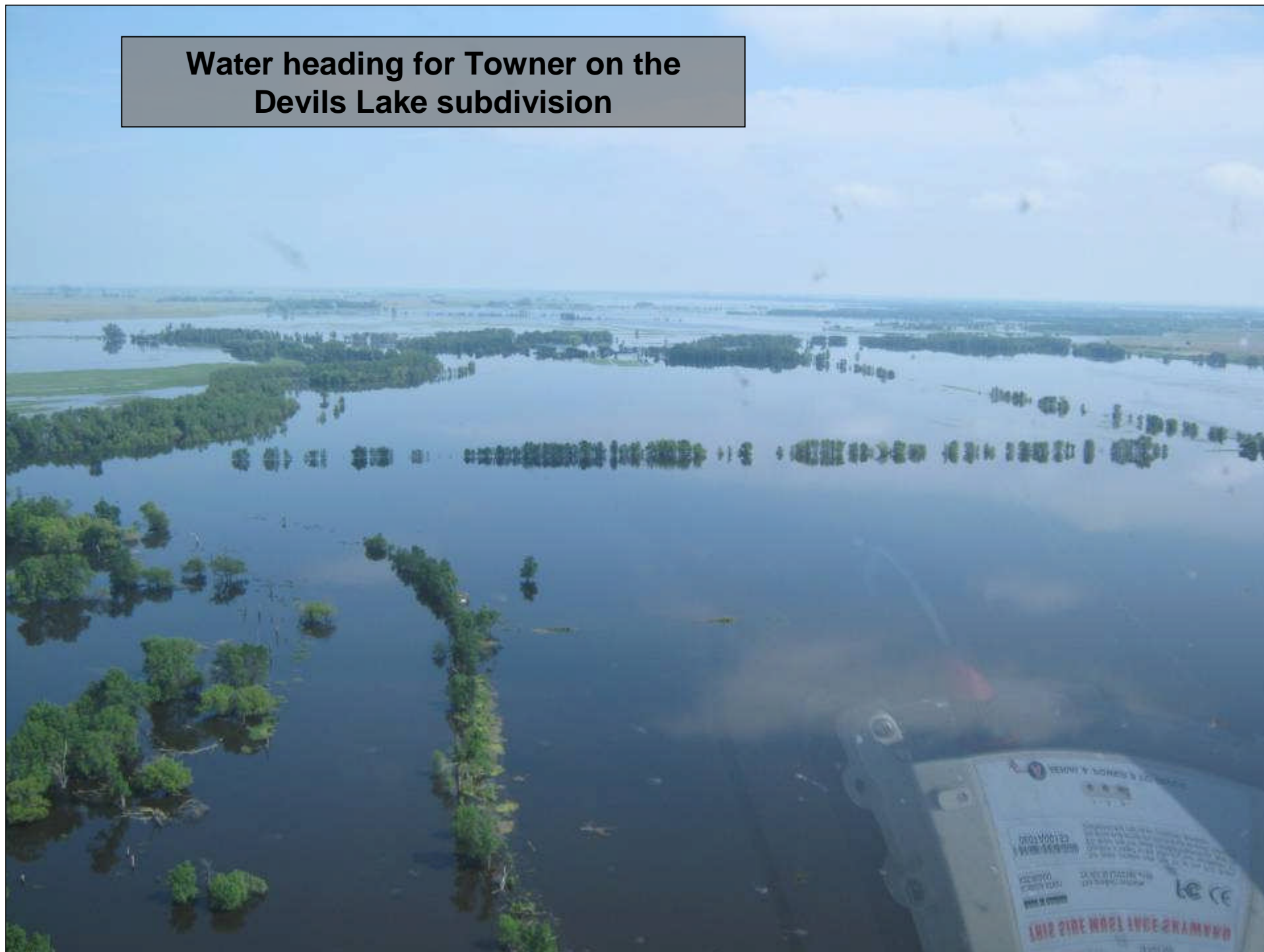
Mouse River at Verendrye



Mouse River at Verendrye



**Water heading for Towner on the
Devils Lake subdivision**



**Bridge 163.08 Devils
Lake subdivision**

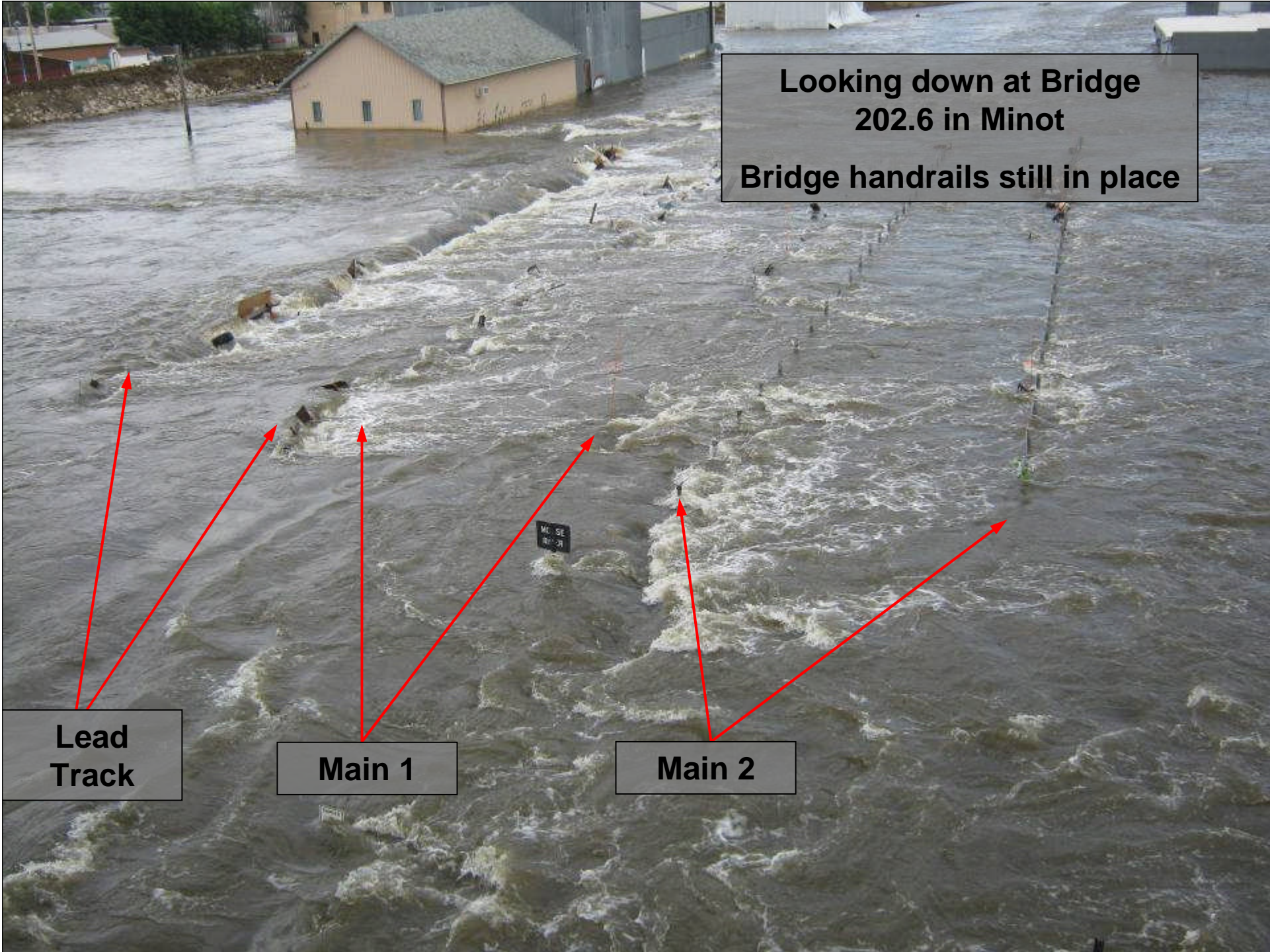


**Bridge 162.6 Devils
Lake subdivision**



**Looking down at Bridge 202.6
in Minot**





**Looking down at Bridge
202.6 in Minot**
Bridge handrails still in place

**Lead
Track**

Main 1

Main 2

MO. SE.
IN-OR

Looking East at
Bridge 202.6





**Looking North at
Bridge 202.6**



**Looking west towards
yard office**

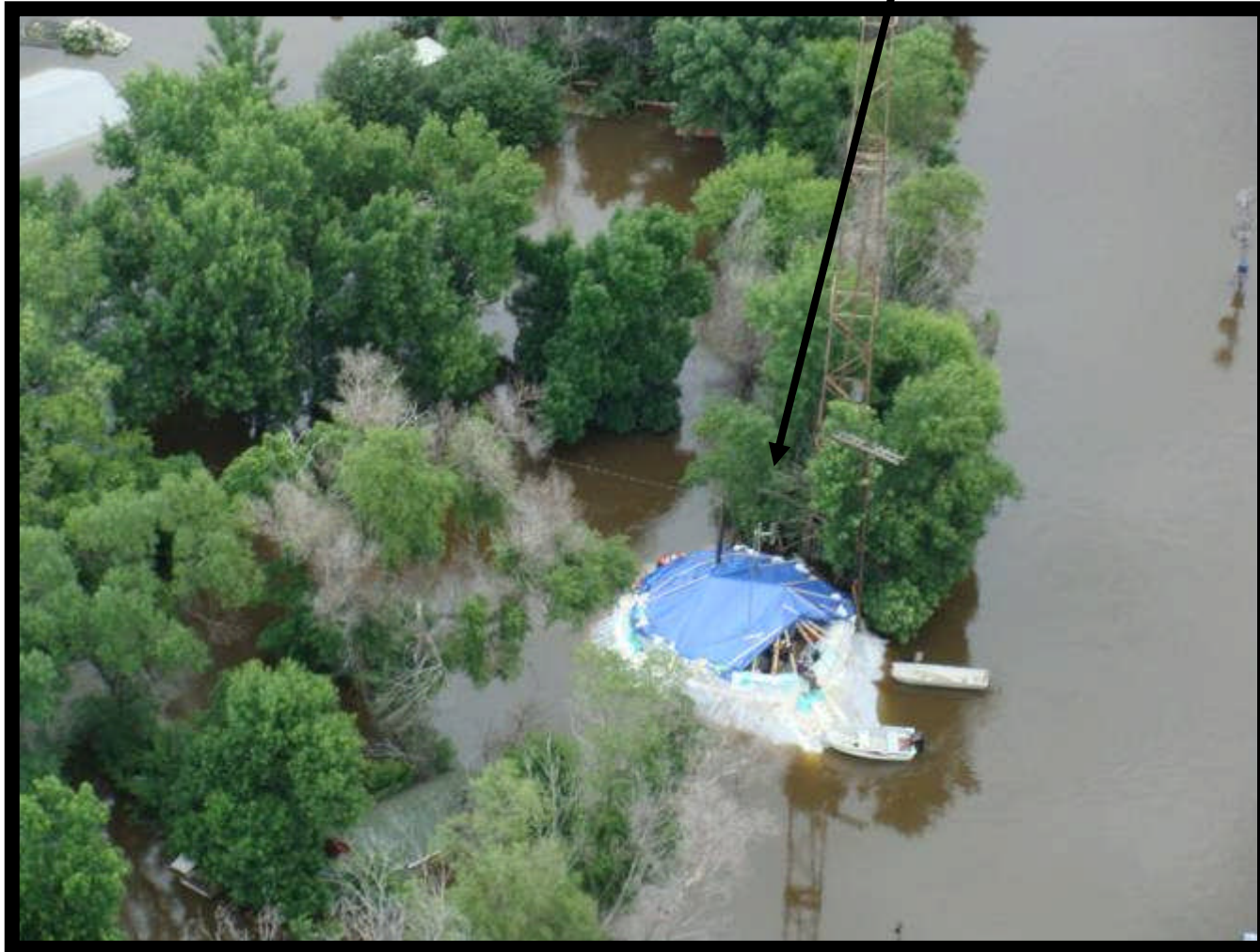
Bridge 202.6 KO Sub MP 202.6X



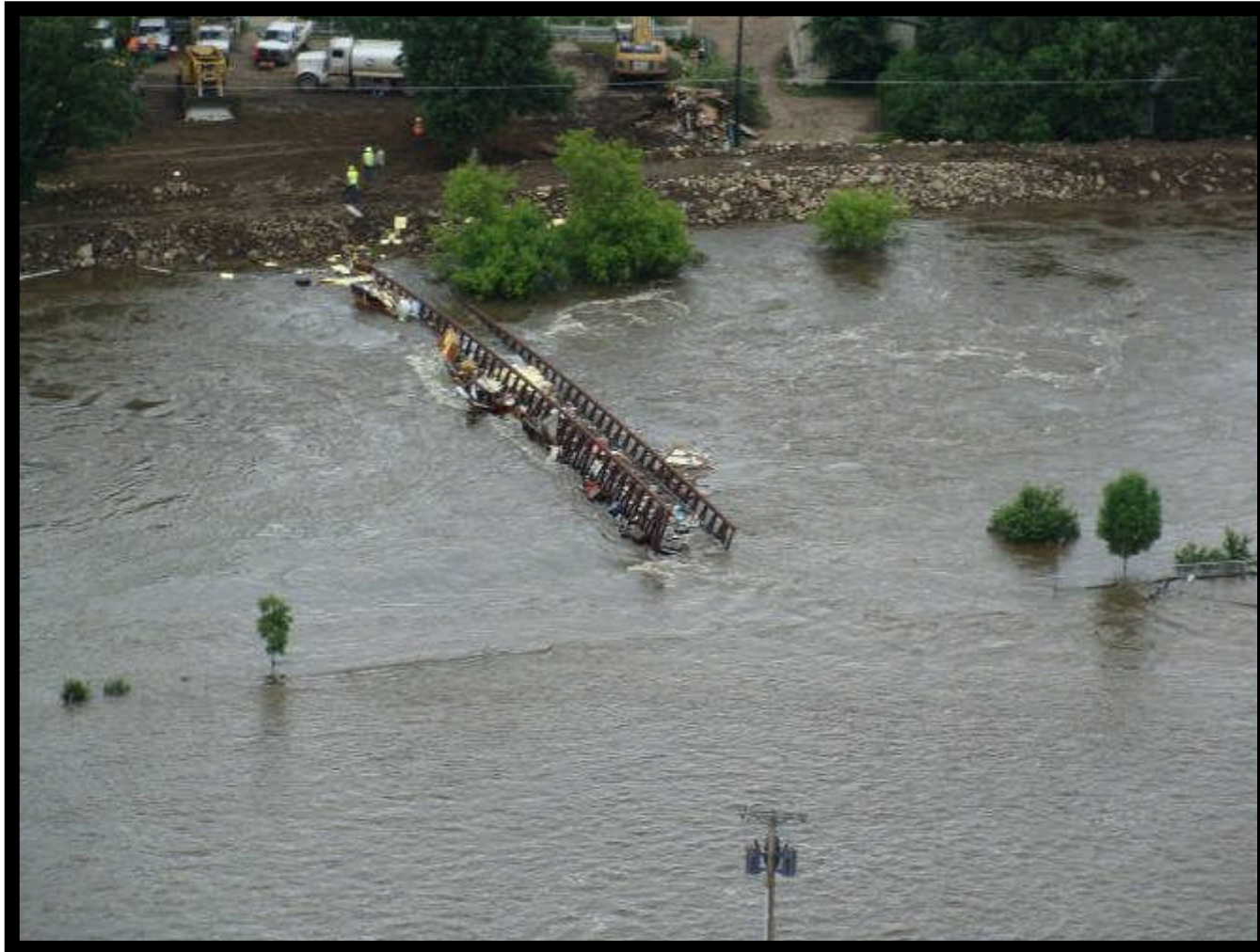
Bridge 0.6 LS35 RR Bridge (6th St. Underpass)



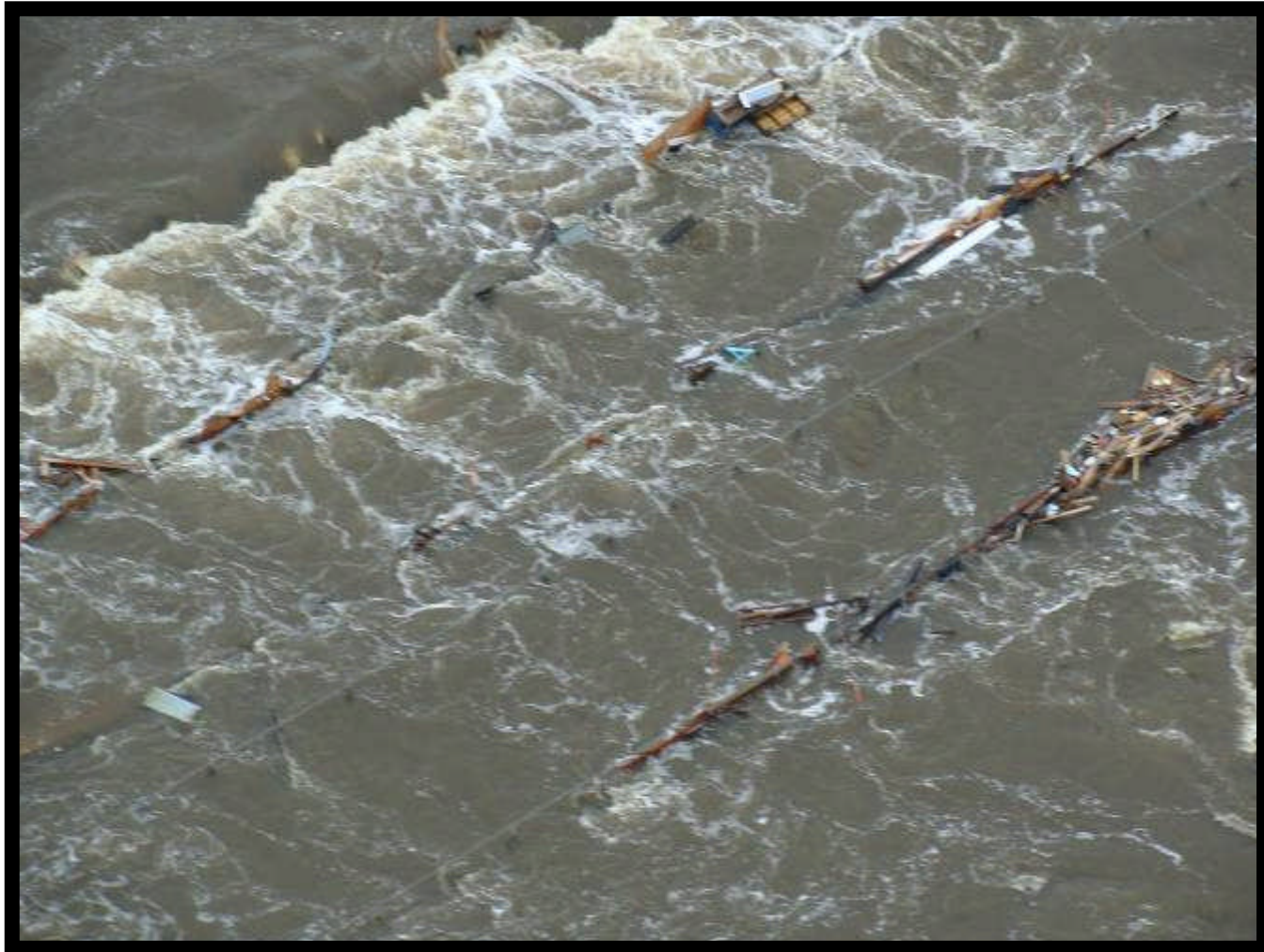
The Wald – Fritz (Interlocker Protection)



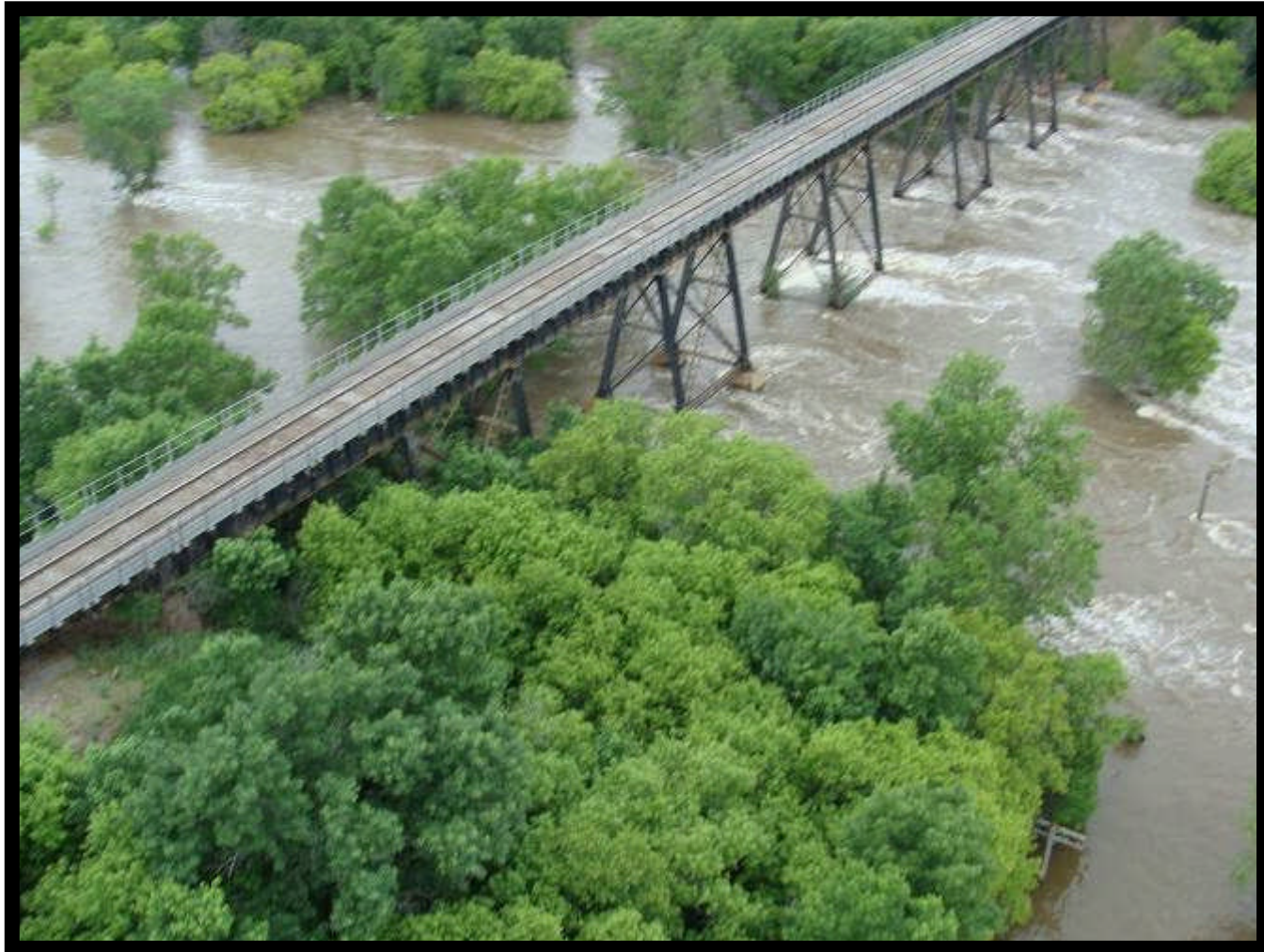
Walk Bridge upstream of 202.6



Bridge 202.6 KO (Mouse)



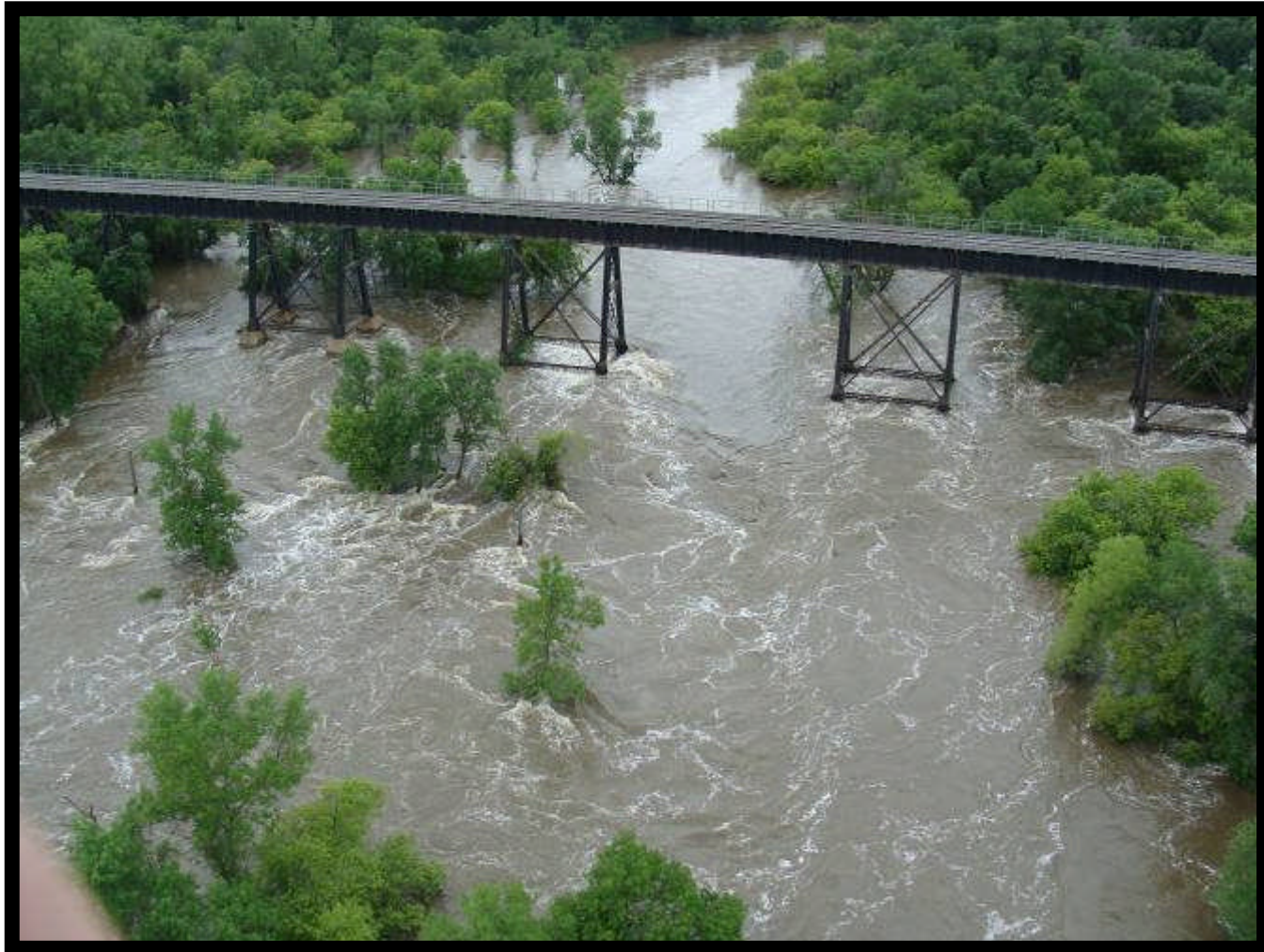
206.2 Placed 10 mph 6/27



206.2



206.2



206.2



206.2



Rip Rapping Br Ends Devils Lake Bridges



Br 163.8 Devils Lake



Devils Lake Subdivision at Towner



Br. 162.6 Devils Lake



Bridge 162.6 Looking West



