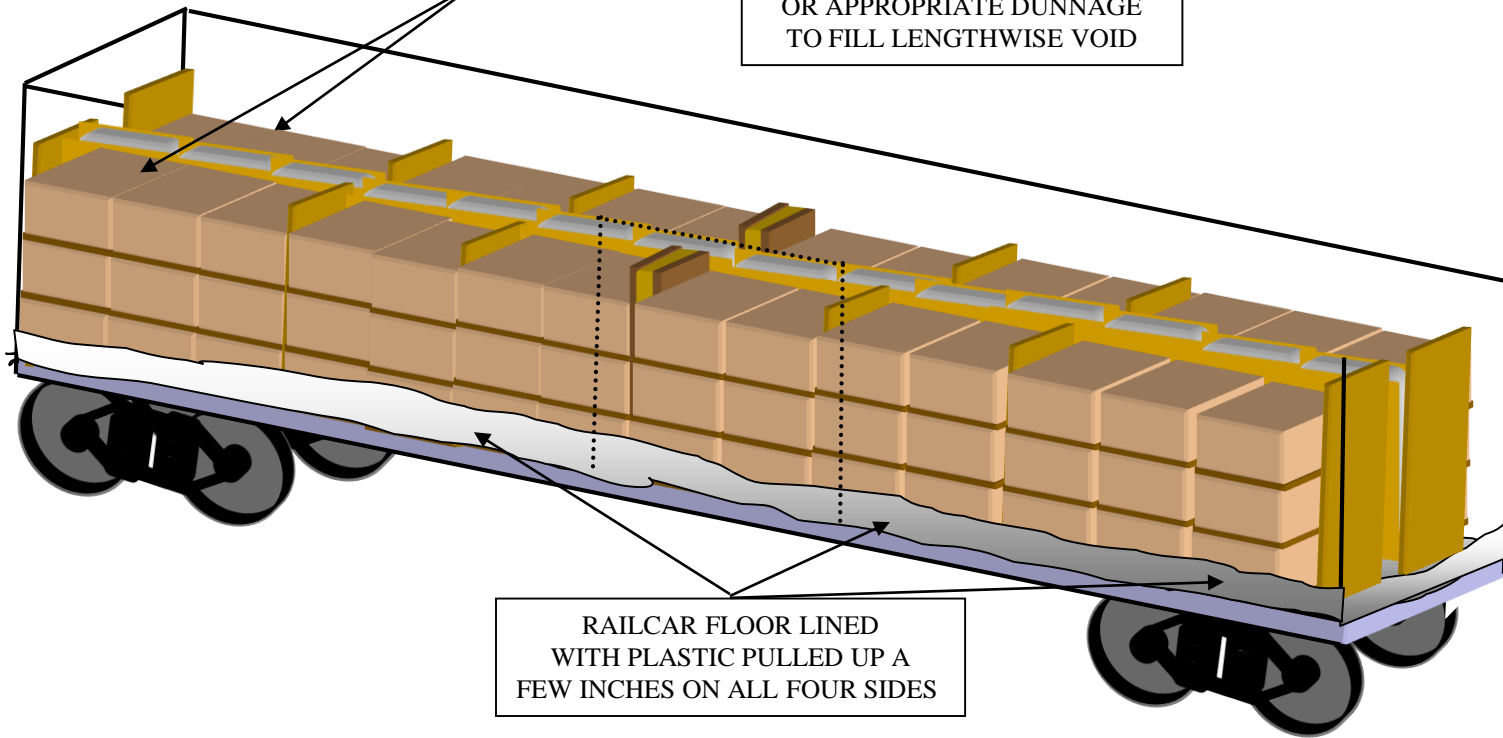


**LOADING METHOD FOR PALLETIZED STRETCH WRAPPED UNITS OF HIDES**

UNITS STOWED TWO WIDE  
NO LATERAL VOIDS

48" X 108" LEVEL 4 D.I.D. BAG  
OR APPROPRIATE DUNNAGE  
TO FILL LENGTHWISE VOID

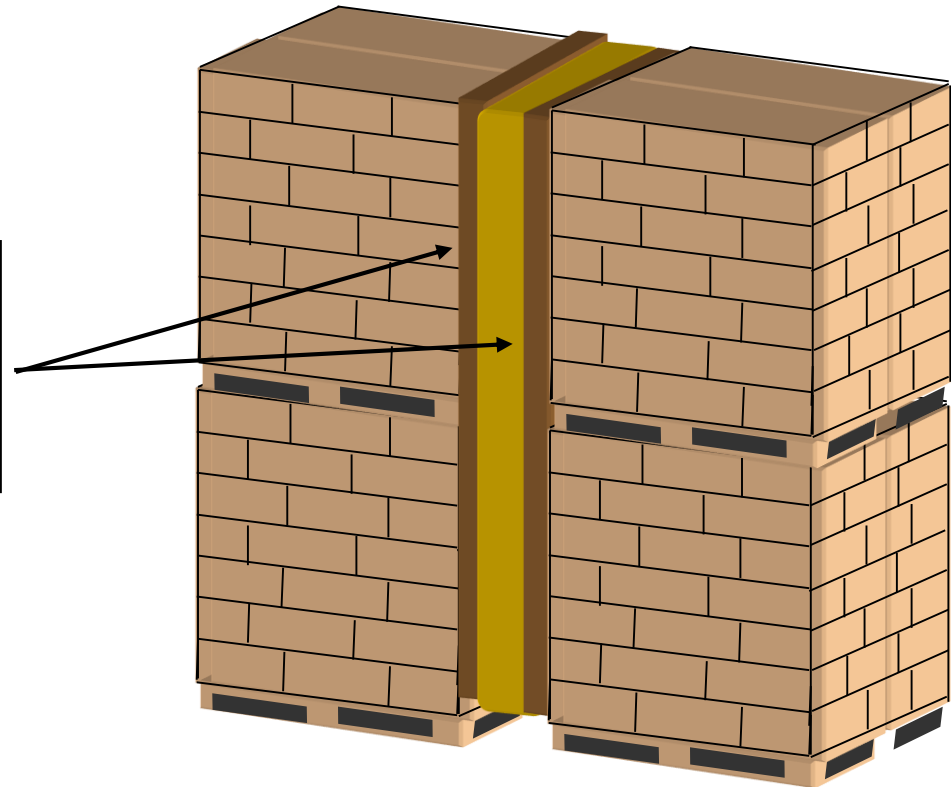


RAILCAR FLOOR LINED  
WITH PLASTIC PULLED UP A  
FEW INCHES ON ALL FOUR SIDES

**FLOOR OF RAILCAR LINED WITH PLASTIC TO PREVENT PRODUCT RESIDUE FROM LEAKING OUT OF RAILCAR**

**AIRBAG APPLICATION**

BUFFER MATERIAL CAN VARY GREATLY,  
FROM SINGLE  
KRAFT PAPER SHEET TO HONEYCOMB FILLED  
BUFFER BOARDS  
USED TO REDUCE AFTER INFLATION VOID TO  
MAXIMUM 12"



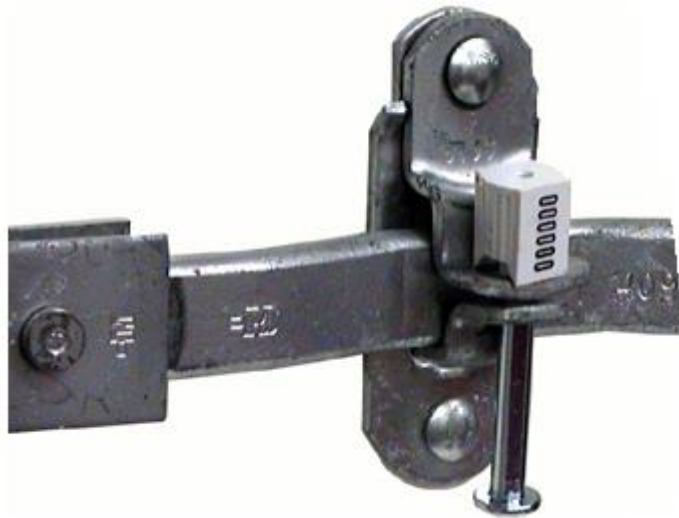
AAR LEVEL (1) AIRBAG. AIRBAG SHOULD NOT TOUCH FLOOR, PALLET EDGES, NOR EXTEND BEYOND LADING IN ANY DIRECTION.  
PLACE VERTICALLY IN CENTERLINE VOID EQUAL TO HEIGHT OF UNITS STOWED TWO HIGH.

# BNSF RAILWAY

A blurred BNSF freight train is moving across a gravel yard at sunset. The train is moving from right to left, creating a motion blur effect. The sky is a mix of orange, yellow, and blue. On the left side of the image, there is a signal tower with two lights, one green and one red. The ground is covered in dark gravel.

## CARGO SECURITY

# SHIPPER SECURITY



## SHIPPER SECURITY

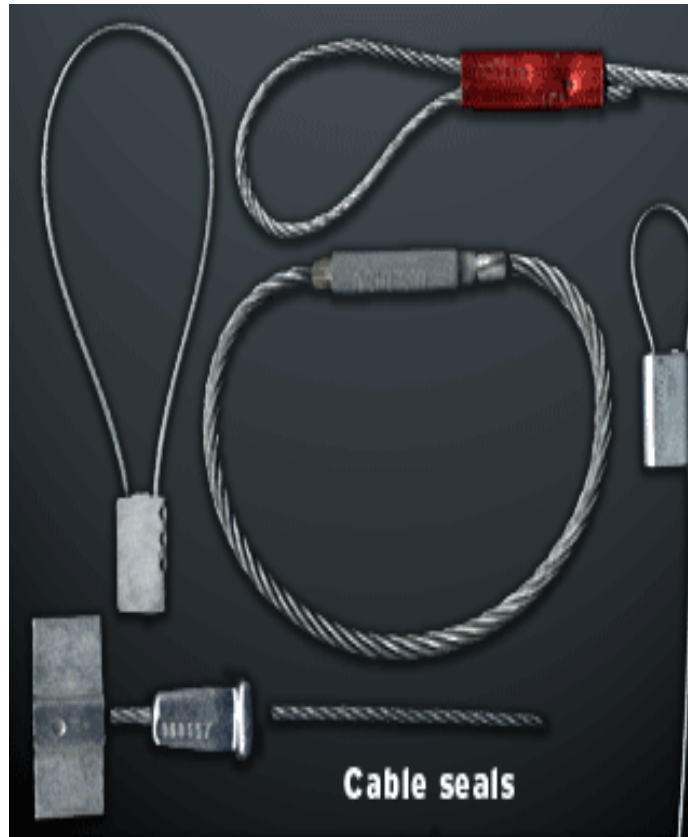
The Shipper is responsible to protect the safety and integrity of the lading, including, but not limited to, the application of security-type seals to the shipment for prevention of unauthorized access to the lading. Security seals must be placed on all doors, hatches, covers, and openings used to load and/or unload lading. Presence of a broken seal or missing seal alone does not deem the lading to be contaminated or adulterated. The Shipper is responsible for providing documented evidence that each shipment is properly protected with security seals when tendered to BNSF.

***BNSF recommends the use of a barrier type of security seal composed of braided steel strands (high tensile strength (non-preformed) steel cable totaling a minimum of one-eighth (1/8") inch (minimum ASTM Grade D standard) in diameter or equivalent bolt seal, which is manufactured of material such as steel or cable with the intent to delay intrusion and is generally removed with a quality bolt or cable cutter.)***

Contact Resource Protection Solutions for any barrier seal questions at 1-800-832-5452.

# CLASSES OF CARGO SEALS

Security seal



High Security seal



Indicative seal



# SUPPLIERS

Below is a sample list of some manufacturers or distributors of transportation security seals:

Red Flag Cargo Security Systems- [www.redflag.cc](http://www.redflag.cc)

E. J. Brooks Company - [www.brookseals.com/](http://www.brookseals.com/)

Tyden Brammall - [www.tydenbrammall.com/](http://www.tydenbrammall.com/)

J.J. Keller & Associates, Inc. -

[www.jjkeller.com/resourcecenters/supplies/home.html](http://www.jjkeller.com/resourcecenters/supplies/home.html)

Uline - [www.uline.com/cls\\_Custom/](http://www.uline.com/cls_Custom/)

VMS Products - [www.vmsproducts.net/](http://www.vmsproducts.net/)